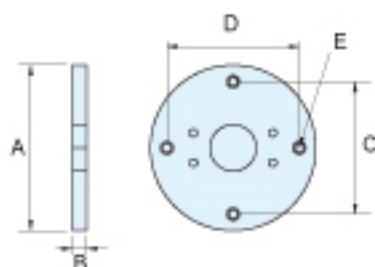
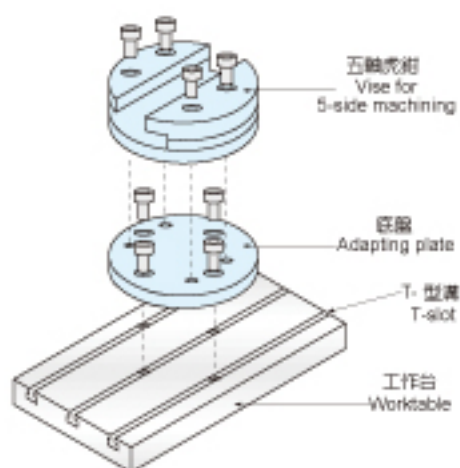
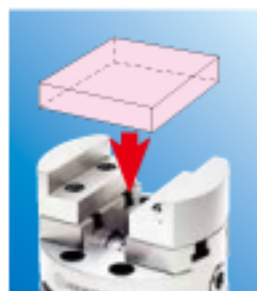


HERBERT**圓形同動求心虎鉗****ISO-9001:2015****SELF-CENTERING VISES****高High 強度strength. 高High 精度accuracy.**

MODEL	A	B	C	D	E	N.W.
TMV-102	159	22	130	130	M10	3.5kg
TMV-132	209	22	160	160	M12	6.5kg
TMV-162	249	22	200	200	M12	9kg

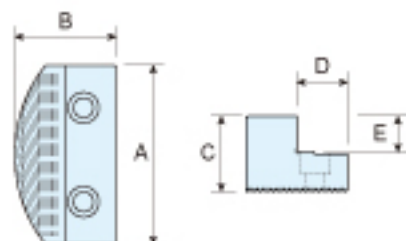
**特性：**

- ▶ 同動式求心虎鉗適用四軸，五軸，立臥式CNC銑床之精密加工。
- ▶ 虎鉗中心重覆定位精度可保持 $\pm 0.01\text{mm}$ 。
- ▶ 虎鉗本體材質使用合金工具鋼，滑軌經高週波熱處理HRC45度以上，可保持高耐磨性。
- ▶ 虎鉗鉗口採用 鋼材質，經熱處理硬度高達HRC55度以上，可拆換方向使用，變化性與互換性極佳。
- ▶ 虎鉗特殊的結構設計，夾持工件時所產生的下壓力能有效防止工件上浮情形，鎖固力極佳。

A good solution for clamping on both turning centres and 5-axis milling machines.

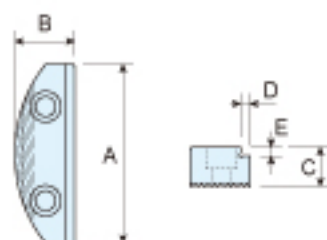
- ▶ For quick & easy workpiece clamping on turning centres or for 5-axis machining on machine centres. Round-shaped style occupies less space and reduces interference.
- ▶ Available are different styles of vise jaws for different machining needs. The TMV vises come with different jaw width of 100mm, 130mm, 160mm and 200mm.

SELF-CENTERING VISES



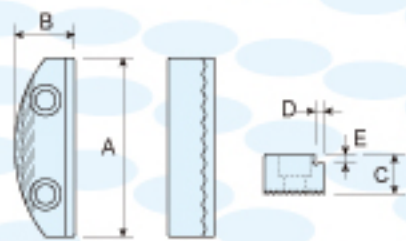
高虎口 HIGH TYPE JAW

MODEL	A	B	C	D	E
TMV-75-J6H	75	35	30	12	15
TMV-100-J6H	99	56	40	28	20
TMV-130-J6H	130	75	45	37	22
TMV-160-J6H	160	85	45	42	22



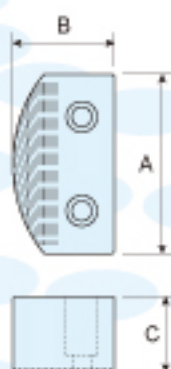
低虎口 LOW TYPE JAW

MODEL	A	B	C	D	E
TMV-75-J6	75	25	15	5	5
TMV-100-J6	99	33	15	5	5
TMV-130-J6	130	40	25	5	5
TMV-160-J6	160	45	25	5	5



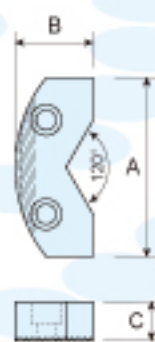
齒式虎口 JAGGED JAW

MODEL	A	B	C	D	E
TMV-75-J9	75	25	15	3	3
TMV-100-J9	99	33	15	3	3
TMV-130-J9	130	40	25	3	3
TMV-160-J9	160	45	25	3	3



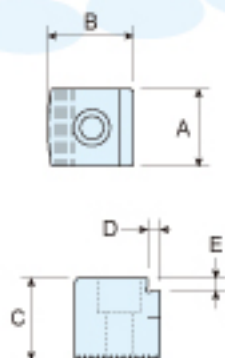
軟質虎口 SOFT JAW

MODEL	A	B	C
TMV-75-J1	75	30	30
TMV-100-J1	99	56	40
TMV-130-J1	130	75	45
TMV-160-J1	160	85	45



V 字虎口 V JAW

MODEL	A	B	C
TMV-75-J3	75	30	15
TMV-100-J3	99	38	15
TMV-130-J3	130	45	25
TMV-160-J3	160	50	25



微型 TMV-75 用虎口 MINIATURE JAW

MODEL	A	B	C	D	E
TMV-75-J6-20	20	25	30	5	5
TMV-75-J6-30	30	25	30	5	5
TMV-75-J6-40	40	25	30	5	5
TMV-75-J6-50	50	25	30	5	5